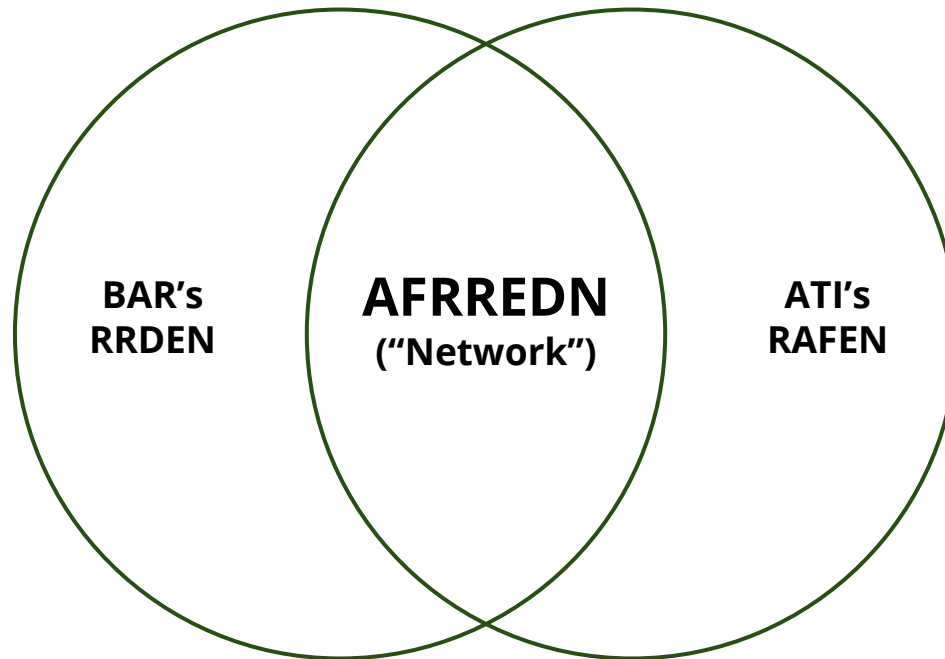




Draft A/F Resources, Research and Extension for Development Network (AFRREDN) Guidelines

NR4DEN Meeting | 23-24 August 2023 | ATI-RDEC Hall

Operational Provision/Clause



- Ensure the proper generation, dissemination, and scaling of AF technologies;
- Make a bigger impact and contribution to the modernization and industrialization of the Philippine AF sector; and
- Strengthen partnerships and collaborations and harmonize programs and services - recognizing that R4D&E are inevitably intertwined and should work together and not in silos.

Purpose and Objectives



**Partnership
mechanism for
R4DE stakeholders**



**Deliver relevant
interventions and
quality programs
and services**



**Conversational
space to discuss
R4DE issues and
concerns**



**Maximize limited
R4DE resources by
reducing
duplication and
overlaps**

Composition and Membership

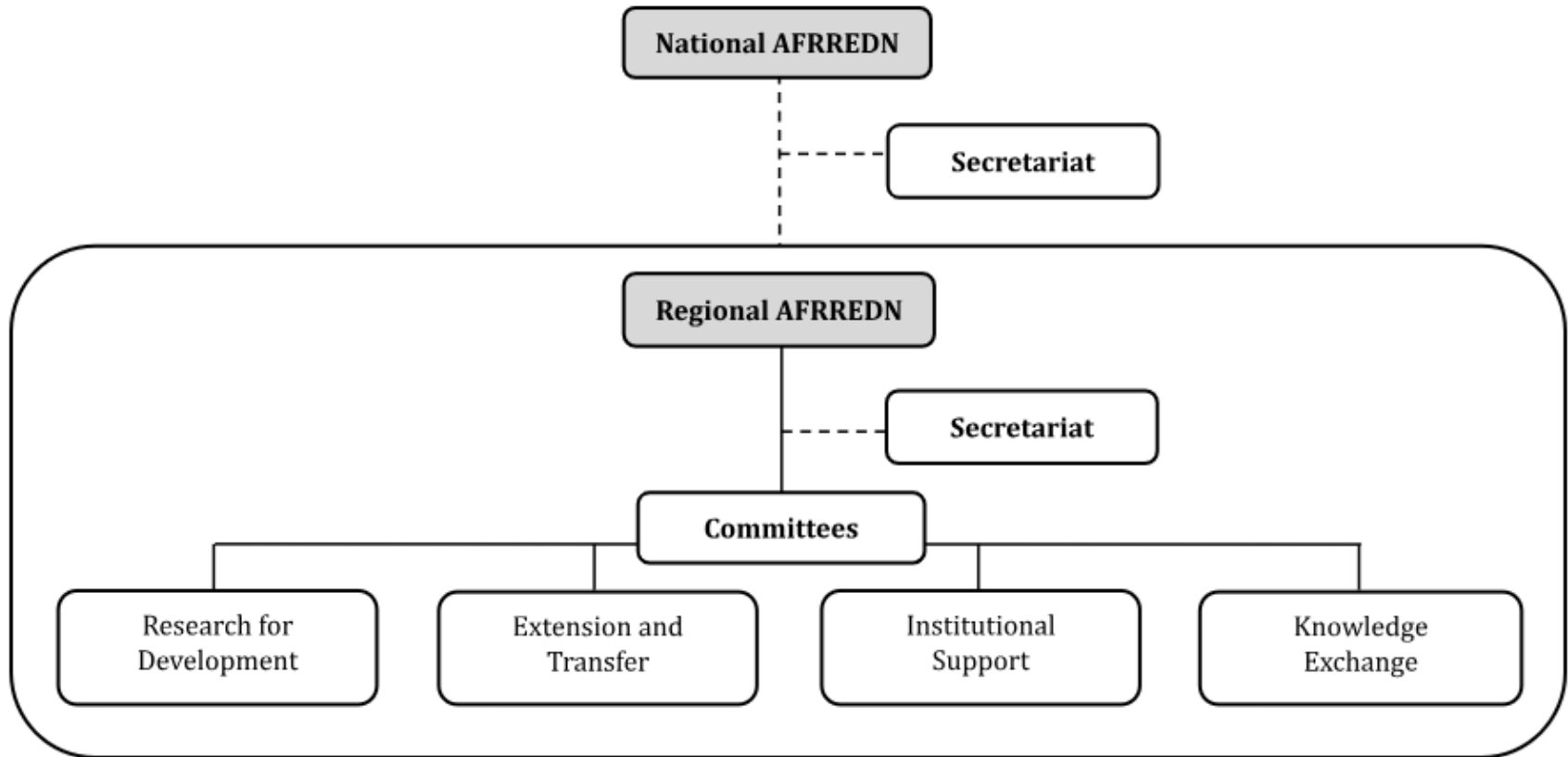



Figure 1. The operational structure of the AFRREDN

Composition and Membership

National AFRREDN

- Chair: DA Undersecretary/Assistant Secretary
(as designated by the DA Secretary)
- Co-Chairs: DA-BAR Director
DA-ATI Director
- Members: DA Family Agencies with R4D&E Mandates
Philippine Association of Research Managers (PHILARM)
Philippine Extension and Advisory Services Network, Inc.
(PhileASNet)
- Secretariat: Personnel from DA-BAR and DA-ATI
- 

Composition and Membership

Regional AFRREDN

- Chair: DA-Regional Executive Director (RED)
- Co-Chair: DA-Regional Field Office's (RFO) Regional Technical Director (RTD)
for
Research and Regulations
- Vice-Chair: DA-RFO RTD for Operations
- Co-Vice-Chairs: Chief, Research Division of DA RFO
Center Director, ATI-Regional Training Center (ATI-RTC)
- Members: DA-RFO Field Operations Division (FOD)
DA-Regional Research Division/Research Experiment Station (RES)
State Universities and Colleges (SUCs)
Provincial LGUs
Regional/Satellite/Branch Offices of other DA agencies
Non-DA government agencies (e.g. DOST, DTI, NEDA-RDC)
ATI-accredited private Extension Service Providers (ESPs)
Association of ATI-accredited Learning Sites for Agriculture (LSA)
Civil Society Organizations (CSOs)
Business enterprises and companies involved in R4DE
- Secretariat: Personnel from the ATI-RTC and the Research Division of the DA-
RFO

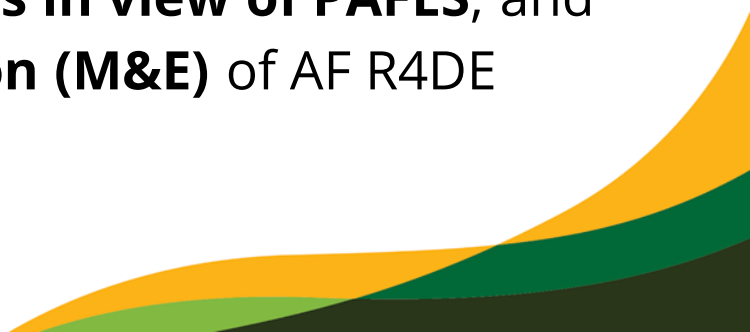
Composition and Membership

Regional AFRREDN


- **Existing members** of DA-BAR's RRDEN and DA-ATI's RAFEN shall **automatically be part** of the regional AFRREDN; and
- Member institutions of AFRREDN are expected to:
 - **Designate** permanent and alternate **representatives**;
 - Actively **support and participate** in **regional R4DE-related activities**;
 - **Join** (at their discretion) the different **R4DE Committees**; and
 - **Provide complementary** human and physical **resources**.

Moreso, a **Memorandum of Understanding (MOU)** shall be signed among members to **formalize the establishment of the "Network"** and signify their commitment in performing any undertakings as agreed upon by the "Network".

Functions of the Regional AFRREDN

- Provide leadership and guidance on the prioritization and **harmonization of AF R4DE activities, programs and services;**
 - Convene and **discuss emerging issues and concerns** and **operational matters;**
 - Ensure that there are **no duplications** of R4DE programs, projects, and activities (PPAs) proposals **for endorsement to any grant funding institutions;**
 - Recommend **AF R4DE capacity building activities;**
 - Develop a cadre of **technical experts and trainers;**
 - Implement **collaborative undertakings;**
 - Provide assistance and **support to LGUs in view of PAFES;** and
 - Assist in the **monitoring and evaluation (M&E)** of AF R4DE interventions.
- 

Functions of the AFRREDN Secretariat

- Facilitate **membership-related concerns**;
 - Respond to **technical, administrative and financial matters** of the “Network”;
 - Facilitate **communication and coordination** among member agencies;
 - Prepare **periodic network reports** in coordination with the Committees; and
 - Ensure the maintenance, operation, and **optimum utilization** of the AFRREDN office.
- 

AFRREDN Committees



Research for Development Committee (RDC):

Determine R4D initiatives based on local needs



Knowledge Exchange Committee (KEC):

Develop and disseminate knowledge products and services



Extension and Transfer Committee (ETC):


Determine appropriate extension and scaling modalities




Institutional Support Committee (ISC):

Identify and provide institutional support to R4DE stakeholders


Functions of the AFRREDN Committees

- Discuss and exchange knowledge related to their **Committee's areas and priorities**;
 - Prepare **plans, budgets, and proposals** of initiatives related to their Committee functions;
 - Conduct **meetings and the review, assessments, and M&E** of the "Network's" initiatives related to their Committee;
 - Provide **technical assistance and support to other Committees**; and
 - Prepare necessary **periodic reports** in coordination with the AFRREDN Secretariat.
- 


Areas of Cooperation

- Knowledge Management;
 - Technology Incubation;
 - Scaling of Technologies;
 - Co-creation/Co-design of Technologies (Stakeholder Engagement);
 - Responsive Interventions (addressing emerging issues and concerns); and
 - Policy development.
- 


Operational Strategies

- Align with **national policy documents** and **regional and provincial** road maps and plans;
 - Produce a 3-year **development plan**;
 - Hold **regular meetings** at least 2x a year (special meetings - as the need arises); and
 - Conduct periodic **performance reviews**.
- 

Funding Support

- DA-RFO shall provide **counterpart resources** (financial, human, physical);
 - **Operations and management of the Network** shall be charged against the fund of **BAR and ATI**; and
 - **Other expenses may be sponsored** by member agencies as highlighted in the MOU and WFP.
- 

Supplementary Guideline

- **Separate guidelines may be issued** by the DA-BAR and DA-ATI as well as the AFRREDN to ensure the proper operationalization of the network and for the successful implementation of AFRREDN initiatives.
- 



Draft A/F Resources, Research and Extension for Development Network (AFRREDN) Guidelines

NR4DEN Meeting | 23-24 August 2023 | ATI-RDEC Hall



DEPARTMENT OF AGRICULTURE

BUREAU OF AGRICULTURAL RESEARCH

RDMIC Bldg., Elliptical Road cor. Visayas ave., Diliman QC., 1104
Trunk line - 8926-2538, 8927-5691, 8285-7882, 8285-7857

ROUTING SLIP

TO: _____

CC: Chair: RMO

SUBJECT: Co-Chair: RTD for Research

Vice Chair: RMO for Operati

Co-Vice Chair: Asst. Dir. & ATI

- For Compliance
- For Appropriate Action
- Approved / Disapproved
- Pls. See Me
- For Your Comments
- For Your Information

REMARKS:

Membership:

Junel B. Soriano, PhD
Director



**Comments on the Draft Implementing Guidelines on the Institutionalization of
Land and Fisheries Resources, Research and Extension for Development Network (AFRREDN)**

	ATI's Version	On Reply to OSEC Comments
	II. Composition and Membership	
Assistant Secretary (DA Secretary)	A. National AFRREDN Chair: DA Undersecretary/Assistant Secretary (as designated by the DA Secretary) Co-Chairs: DA-BAR Director DA-ATI Director Members: DA Family Agencies with R4D&E Mandates Philippine Association of Research Managers (PHILARM) Philippine Extension and Advisory Services Network, Inc. (PHIEASNet) Secretariat: Personnel from DA-BAR and DA-ATI	1. The suspension of member-agency from the network is an action taken as a response to the persistent lack of participation in any of the activities of the network such as regular meetings. The possible consequences for a suspended member-agency include restricting their recognition as a member of the network and limiting their access to shared resources of the network and within the member-agencies. The duration and specific terms of suspension shall be agreed upon by the member-agencies. Nonetheless, the provisions regarding the possible suspension of member-agencies shall be properly specified in the network's Memorandum of Understanding (MOU).
Executive Directors (R4D&E Association of IILARM) Advisory (PHIEASNet) Research and DA-ATI	B. Regional AFRREDN Chair: DA Regional Executive Director (RED) Co-Chair: DA Regional Field Office's (DA-RFO) Regional Technical Director (RTD) for Research and Regulations/Operations Co-Vice-Chairs: Chief, Research Division of DA-RFO and Center-Director, ATI-Regional Training Center (ATI-RTC) Members: DA-RFO Field Operations Division (FOD) DA-Regional Integrated Agricultural Research Center (RIARC)/ Research Outreach Station (ROS) State Universities and Colleges (SUCs) Provincial/City/Municipal LGUs Regional/Satellite/Branch Offices of other DA and non-DA government agencies ATI-accredited private Extension Service Providers (ESPs) Association of ATI-accredited Learning Sites for Agriculture (LSA) Civil Society Organizations (CSOs) Business enterprises and companies involved in R4DE	2. In terms of the "important matters" to be discussed by the Regional network in item b of the Regional AFRREDN functions, these refer to emerging issues and concerns that need immediate responses as well as the actions to be taken as instructed by higher government officials at the national level.
Director of Regulations (IC Operations) Division of DA-RFO (DA-RFOs) Division of Agricultural (C)/ Research (Colleges (SUCs) (Provincial LGUs Branch Offices of government Extension Service Accredited Learning (SA) Organizations (CSOs) and companies ATI-RTC and the		3. For the composition of the document highlighted the suggestion of your office and was accepted by the ATI, to call the heads of the committee as Focals. It is suggested that Focals as well as Alternate Focals be stated as the ones who will lead each committee. The identification and assignment shall depend on the discussions and agreements of the different regional networks considering the extent of membership. A Special Order (SO) signed by the DA-RED shall be issued to formalize the designation of the Focals and members of each Committee. The Committee members shall have the discretion to decide and strategize on how they can comply and take action given their respective functions and responsibilities.
	Secretariat: Personnel from the ATI-RTC and the Research Division of the DA-RFO	

Rule 81.13. Under the guidance of the BAR and ATI, the NCRCs shall, in relation to their assigned commodities:

Rule 81.13.1. Provide national leadership in the planning and orchestration of the implementation and M&E of the RDE program;

Rule 81.13.2. Undertake basic research;

Rule 81.13.3. Undertake upstream and applied research including strategic research, and

Rule 81.13.4. Develop and maintain a network of national, regional, and provincial collaborators in their RDE programs.

Rule 81.14. Under the guidance of the NCRCs and in close cooperation with the relevant NUCAF, RFU and PA, the RIARCs shall, in relation to their assigned commodities or fields:

Rule 81.14.1. Provide leadership in the planning and orchestration of the implementation and M&E of an integrated RDE within a farming systems approach in coordination with the Regional Training Centers

Rule 81.14.2. Undertake midstream and downstream applied research in the region; and,

Rule 81.14.3. Develop and maintain a network of provincial collaborators in undertaking the regional RDE programs.



Republic of the Philippines
DEPARTMENT OF AGRICULTURE
Department of Agriculture Building
Cebu City

13 June 2018

Administrative Order No. 05
Series of 2018

SUBJECT: GENERAL GUIDELINES AND PROCEDURES FOR THE OPERATION OF THE REGIONAL RESEARCH AND DEVELOPMENT, EXTENSION NETWORK (RRDEN) FOR AGRICULTURE AND FISHERIES

Rule 81.14.J of the Implementing Rules and Regulations (IRR) of the Agriculture and Fisheries Modernization Act (AFMA) authorizes the DA Regional Integrated Agricultural Research Centers (RIARC)s, under the guidance of the Bureau of Agricultural Research (BAR) to develop and maintain a network of regional and provincial collaborators in undertaking the regional RDE programs. Consistent herewith and pursuant to AFMA, the Regional Research and Development, Extension Network (RRDEN) for Agriculture and Fisheries was created for each region.

In cognizance of the importance of the regional network and rationalizing RDE efforts at the regional level, BAR continuously provides technical and financial support in the operation of RRDEN in all regions.

Therefore, the following guidelines and procedures of the RRDEN for agriculture and fisheries are hereby issued for guidance of all regional RDE partner-institutions:

I. PURPOSE OF THE NETWORK

The purpose of the RRDEN is to strengthen the regional RDE priority setting and implementation of projects/programs on agriculture and fisheries sector, to contribute to an empowered R&D system which will lead to expanded economic opportunities for those who are engaged in producing agriculture, fisheries, and forest products particularly small and subsistence farmers and fisherfolk.

II. OBJECTIVES OF THE NETWORK

The RRDEN has the following objectives:

1. Ensure complementation of RDE programs and activities among research and development institutions as determined by the national priorities set by BAR and the regional priorities set by the DA-RFOs/BFAR RFOs;
2. Effectively develop, promote, and transfer information/technologies to farmers/fisherfolk and other end-users;

13 June 2018

Administrative Order No. 05
Series of 2018

SUBJECT: GENERAL GUIDELINES AND PROCEDURES FOR THE OPERATION OF THE REGIONAL RESEARCH AND DEVELOPMENT, EXTENSION NETWORK (RRDEN) FOR AGRICULTURE AND FISHERIES


EMMANUEL F. PIÑOL
 Secretary
 Department of Agriculture

DEPARTMENT OF AGRICULTURE
IN REPLYING PLEASE CITE THIS CODE
For Signature: S-06-18-0238
Received: 06/20/2018 09:32 AM